

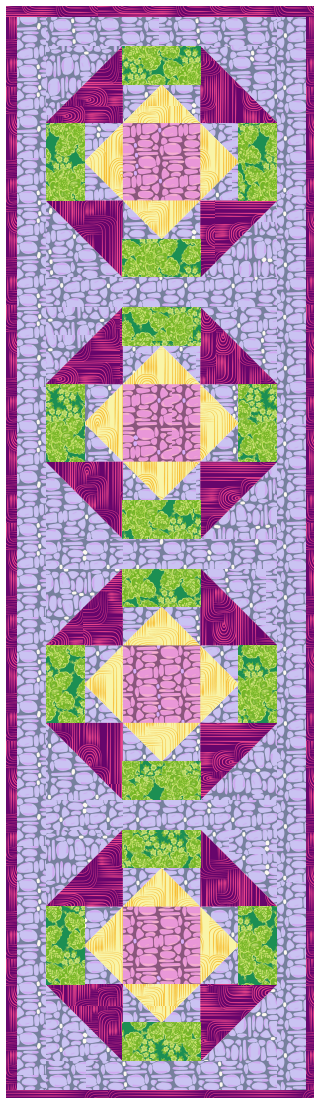
TABLE RUNNER

Designed by Lisa Swenson Ruble

15" x 55-1/2"
38cm x 141cm

Table GEMS

STUDIO
palettes



FREE PATTERN

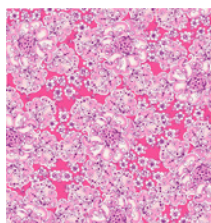
Table GEMS

FABRIC REQUIREMENTS



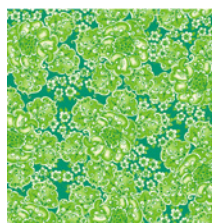
Choose 5 fabrics + backing fabric or as follows featuring STUDIO PAlettes

A



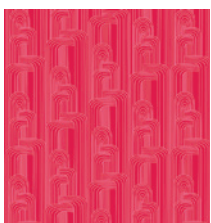
RBS-SP2393-32
MAGENTA
1/4 Y

B



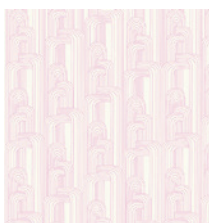
RBS-SP2393-09
GREEN
1/4 Y

C



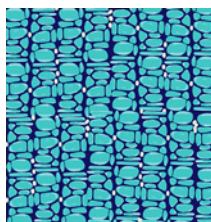
RBS-SP2392-06
RED
2/3Y

D

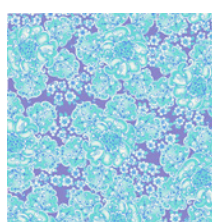


RBS-SP2392-14
PINK
1/4 Y

E



RBS-SP2390-07
BLUE
5/8Y



RBS-SP2393-07
BLUE
Backing Fabric
7/8 Y / 80cm

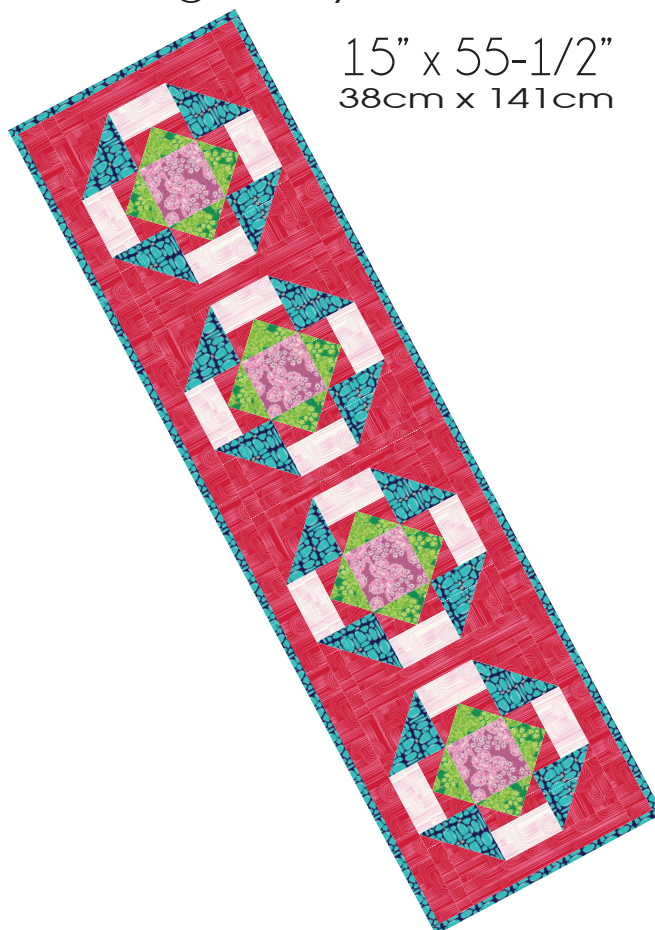
+ BATTING 21"x62"

Binding Fabric Included RBS-SP2391-20 BLUE

TABLE RUNNER

Designed by Lisa Swenson Ruble

15" x 55-1/2"
38cm x 141cm



1/4" / 6.5cm Seam Allowance
WOF: Width of the Fabric

CUTTING DIRECTIONS

Cutting

Based on 42" wide fabric

From Fabric A:

(4) 4-1/2" squares

From Fabric B:

(16) 2-1/2" x 4-1/2"
rectangles

From Fabric C:

(8) 5" squares
(32) 2-1/2" squares
(3) 2" x WOF strips
(5) 2" x 12-1/2" rectangles

From Fabric D:

(16) 2-1/2" x 4-1/2"
rectangles

From Fabric E:

(8) 5" squares
(4) 2-1/4" x WOF strips
for binding

CONSTRUCTION

MAKING THE BLOCKS

HST: Half Square Triangle

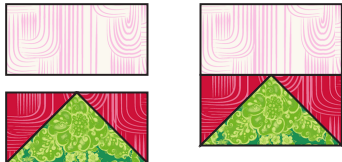
1. Draw a diagonal line on the wrong side of (32) 2-1/2" C squares. Position (1) marked square right sides together on the left end of (1) 2-1/2" x 4-1/2" B rectangle. Sew on the line, trim seam allowance to 1/4" and press open. Repeat on the right end of the rectangle. Make (16) B-C flying geese units.

B-C unit



Make 16

2. Sew (1) B-C unit to one 2-1/2" x 4-1/2" D rectangle. Make (16) stacked units.



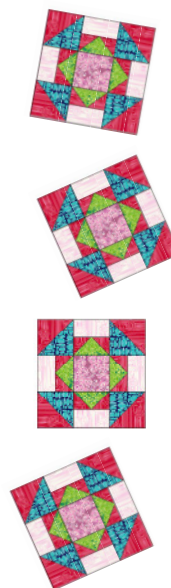
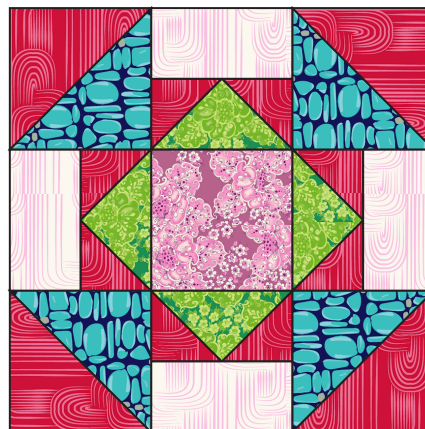
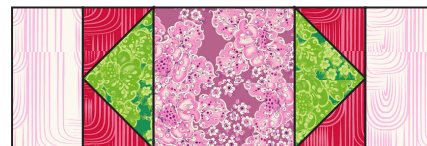
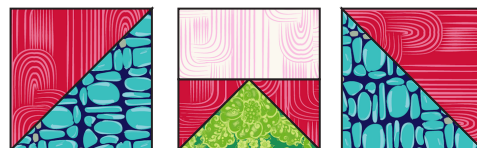
3. Draw a diagonal line on the wrong side of (8) 5" C squares. Pair (1) marked square right sides together with (1) 5" E square. Sew 1/4" on both sides of the drawn line, cut on the line, and press both HSTs open. Trim to measure 4-1/2" square. Make a total of (16) C-E units.

C-E unit



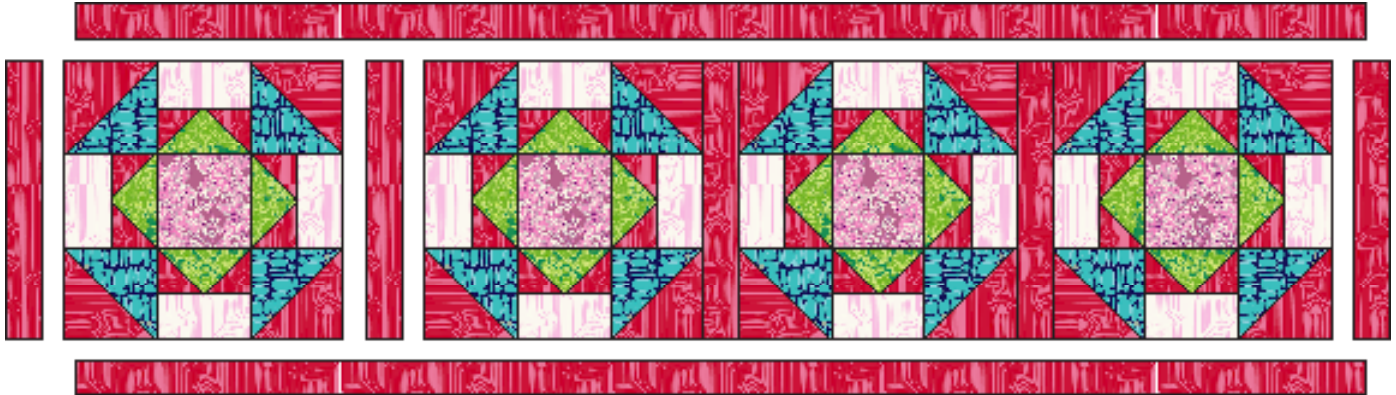
Make 16

4. Lay out (4) stacked units, (4) C-E units and (1) 4-1/2" A square into (3) rows of (3). Sew into rows and join the rows to complete the 12-1/2" square quilt block. Make a total of (4) quilt blocks.



QUILT Layout

1. Cut the backing yardage in half into 20" x 31-1/2" pieces. Sew pieces together along short edges to create a runner backing.
2. With seam vertical to runner top, layer quilt top, batting and backing and quilt as desired.
3. Piece (4) 2-1/2" x WOF E strips at short ends and bind the Table Gems table runner.



Runner Layout Diagram

QUILT Assembly

Sew Right Sides Together

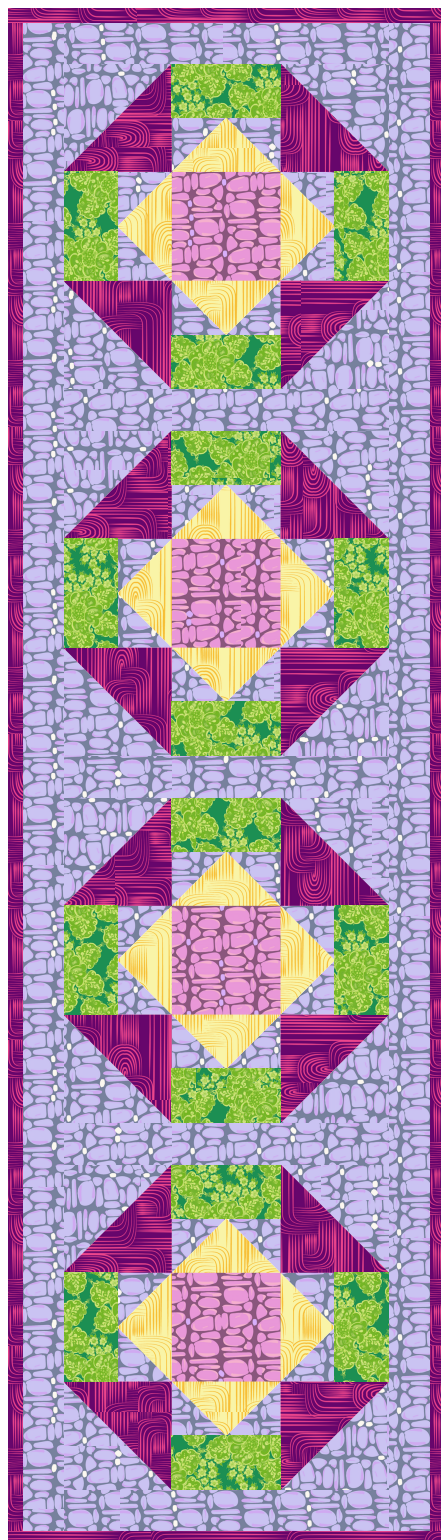
- Place the BACKING fabric on a large flat surface wrong side upward. Stretch it flat with masking tape against the surface.
- Place the BATTING on top of the backing fabric.
- Place the TOP of the quilt onto the batting with the right side facing upward. Smooth away wrinkles using your hands.
- Pin all layers together and baste with basting thread, using long stitches. You can also use large safety pins to join the layers.
- Machine or hand quilt starting at the center and working towards the corners. This is a personal preference, so have fun.
- After you have finished, trim off excess of any fabric or batting, squaring the quilt to proceed to binding.

QUILT Binding

- Piece (4) 2-1/2" X WOF of Fabric E strips at short ends.
- Start sewing the binding strip in the middle of one of the sides of the quilt. Place the strip right sides of the quilt, placing the strip right side down and leaving approximately a 5" tail.
- Sew with 1/4" seam allowance (using a straight stitch) aligning the strip's raw edge with the quilt top's raw edge. Stitch around the quilt, mitering the corners.
- Stop stitching before you reach the last 5-6".
- Lay the loose ends of the binding flat along the quilt edge, folding the ends back on themselves to form a crease where they meet. Stitch along this crease to join the ends.
- Complete sewing the binding onto the quilt edge.
- Turn the binding to the back of the quilt, hiding the raw edge, and stitch by hand using a blind stitch.

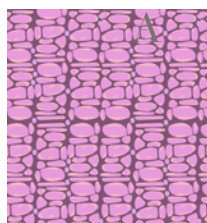
Enjoy!

ALTERNATE Colorway



Choose 5 fabrics + backing fabric or as follows featuring STUDIO PALETTES

A



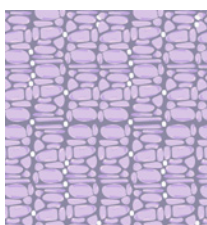
RBS-SP2319-14
PINK
1/4 Y

B



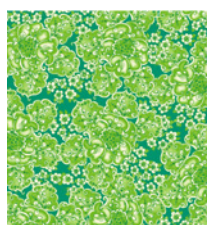
RBS-SP2392-08
YELLOW
1/4 Y

C



RBS-SP2390-21
LILAC
2/3 Y

D



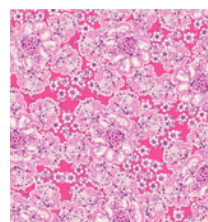
RBS-SP2393-09
GREEN
1/4Y

E



RBS-SP2393-11
VIOLET
5/8Y
Includes Binding

F



RBS-SP2393-32
MAGENTA
Backing Fabric
7/8 Y / 80cm

+ BATTING 21"x62"
Binding Fabric Included
RBS-SP2393-11 VIOLET (E)



While careful proofing to ensure the accuracy of this pattern has been undertaken, we can not be responsible for printing errors or inaccurate piecing. This is due to variances in which individuals work. Please be sure to read all instructions carefully before starting to cut and construct this project.

Remember to wash and press your fabrics prior to cutting.